



**24** hours  
*BUILT TO WORK*

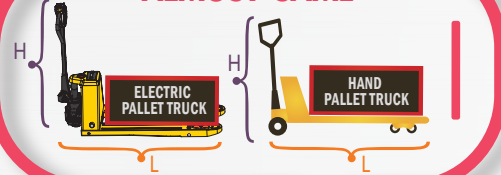


# Pay A Little More Save Much More

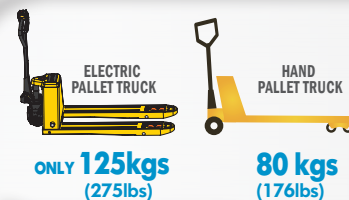
BUILT TO  
WORK  
**24**  
HOURS

## SMART SIZE

ALMOST SAME



## LIGHT WEIGHT

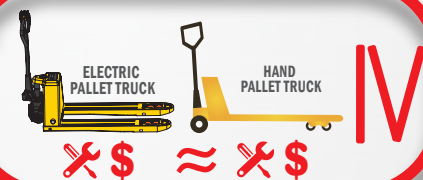


## EFFICIENCY

3 Times Higher Than Manual Pallet Truck

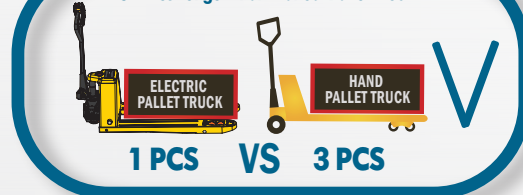


## EASY MAINTENANCE



## LIFETIME

3 Times Longer Than Manual Pallet Truck



HIGH RETURN OF INVESTMENT

**Safety**

**PRODUCTIVE**

1 MONTH COST  
RECOVERY

GO

Optimize  
your operations

**SAVE LABOUR**

Brake any time anywhere

Release manpower

# ● MAINTENANCE SO EASY !!

**5 YEAR  
WARRANTY  
CHASSIS**



**Brushless drive motor,  
maintenance free**



**Lithium battery  
maintenance free**



**Recharge Alert**



**Error code display**



**6s Replace Battery**



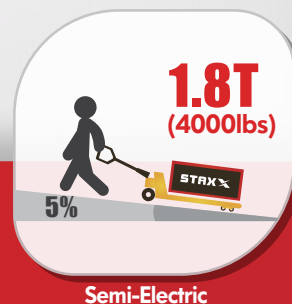
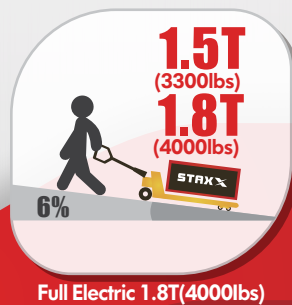
**60s Replace Drive Wheel**

# ● PERFORMANCE



**Traveling speed**

<b>UNLADEN</b>	<b>5Km/h</b> (3.1mph)
<b>LADEN</b>	<b>4Km/h</b> Full Electric (2.5mph)
	<b>3.5Km/h</b> Semi-Electric (2.2mph)



Full Electric 1.8T(4000lbs)

Semi-Electric

**Gradeability**



# ● CHARACTERISTICS

## Closer look into

Notes: "★" --Available with different options.





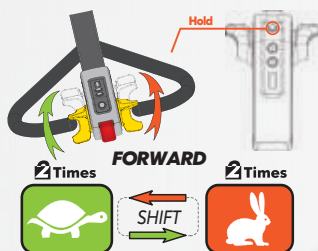
# SMART FUNCTION

## SMART FUNCTION

01

### Turtle Speed

Horn Remains Pressed & Forward 2 times



## SMART FUNCTION

02

### Up-Right Drive

Reverse Button & Forward Throttle Remain Pressed, Power On

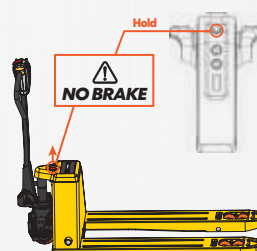


## SMART FUNCTION

03

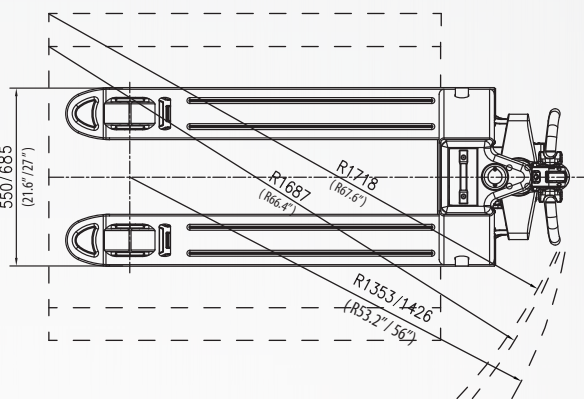
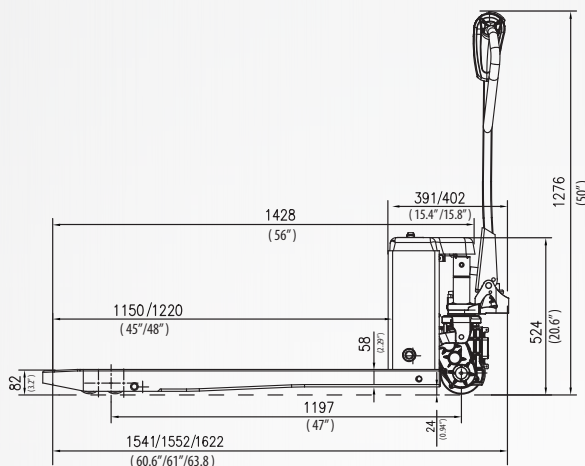
### Engineering Mode (Brake Release)

Horn Remains Pressed, Power On



⚠ In up-right drive mode, vehicle will move when handle is operated at any position. Please avoid misoperation.

⚠ Brake release mode is only for emergencies, not allowed for vehicle with normal conditions.



MODEL		PPT18H	PPT18HQ	EPT15H	EPT18H
<b>CHARACTERISTICS</b>					
1.1 Capacity	kg	1800	1800	1500	1800
1.2 Load center	mm	600	600	600	600
1.3 Standard overall fork width	mm	550/685	550/685	550/685	550/685
1.4 Fork length	mm	1150/1220	1150/1220	1150/1220	1150/1220
1.5 Overall length	mm	1552/1622	1552/1622	1552/1622	1552/1622
1.6 Lowered height of fork	mm	82±2	82±2	82±2	82±2
1.7 Max height of fork	mm	197	197	197	197
1.8 Overall height (with tiller)	mm	1276	1276	1276	1276
1.9 Rear body width	mm	550/685	550/685	550/685	550/685
1.10 Minimum turning radius	mm	1353/1426	1353/1426	1353/1426	1353/1426
<b>PERFORMANCE</b>					
2.1 Max.Traveling speed	laden	km/h	3.5	3.5	4
	unladen	km/h	5	5	5
2.2 Gradeability	laden	%	5	5	6
	unladen	%	20	20	20
2.3 Traveling	kw	DC 0.75 Brushless	DC 0.75 Brushless	DC 0.75 Brushless	DC 0.85 Brushless
2.4 Lifting	kw	Hydraulic	QUICK LIFT	DC 0.5	DC 0.5
<b>BATTERY</b>					
4.1 Voltage	v	48	48	48	48
4.2 Capacity/type	Ah	10 Ah Lithium	10 Ah Lithium	10 Ah Lithium	10 Ah Lithium
<b>BRAKE TYPE</b>					
5.1 Travel brake		Regenerate	Regenerate	Regenerate	Regenerate
5.2 Brake		Electromagnetic	Electromagnetic	Electromagnetic	Electromagnetic
<b>CONTROLLER</b>					
6.1 Controller		STAXXB1501	STAXXB1501	STAXXB1501	STAXXB1501

	PPT40H	PPT40HQ	EPT33H	EPT40H
<b>CHARACTERISTICS</b>				
Capacity	lb	4000	4000	3300
Load center	in	23.6	23.6	23.6
Standard overall fork width	in	21.6/27	21.6/27	21.6/27
Fork length	in	45/48	45/48	45/48
Overall length	in	61/63.8	61/63.8	61/63.8
Lowered height of fork	in	3.2±0.8	3.2±0.8	3.2±0.8
Max height of fork	in	7.8	7.8	7.8
Overall height (with tiller)	in	50	50	50
Rear body width	in	21.6/27	21.6/27	21.6/27
Minimum turning radius	in	53.2/56	53.2/56	53.2/56
<b>PERFORMANCE</b>				
Max.Traveling speed	laden	mph	2.2	2.2
	unladen	mph	3.1	3.1
Gradeability	laden	%	5	5
	unladen	%	20	20
Traveling	kw	DC 0.75 Brushless	DC 0.75 Brushless	DC 0.75 Brushless
Lifting	kw	Hydraulic	QUICK LIFT	DC 0.5
<b>BATTERY</b>				
Voltage	v	48	48	48
Capacity/type	Ah	10 Ah Lithium	10 Ah Lithium	10 Ah Lithium
<b>BRAKE TYPE</b>				
Travel brake		Regenerate	Regenerate	Regenerate
Brake		Electromagnetic	Electromagnetic	Electromagnetic
<b>CONTROLLER</b>				
Controller		STAXXB1501	STAXXB1501	STAXXB1501

**| MAKE**  
**YOUR JOB**  
**EASIER!**

